



Medicine Wing Establishment

Palm-Top Digital X-Ray Imaging system - DX-150



Digital X-Ray Fits in Your Palm.



Introducing NEW
Portable Digital Radiography Sensor

DX-150



Made in Japan



RF SYSTEM lab.

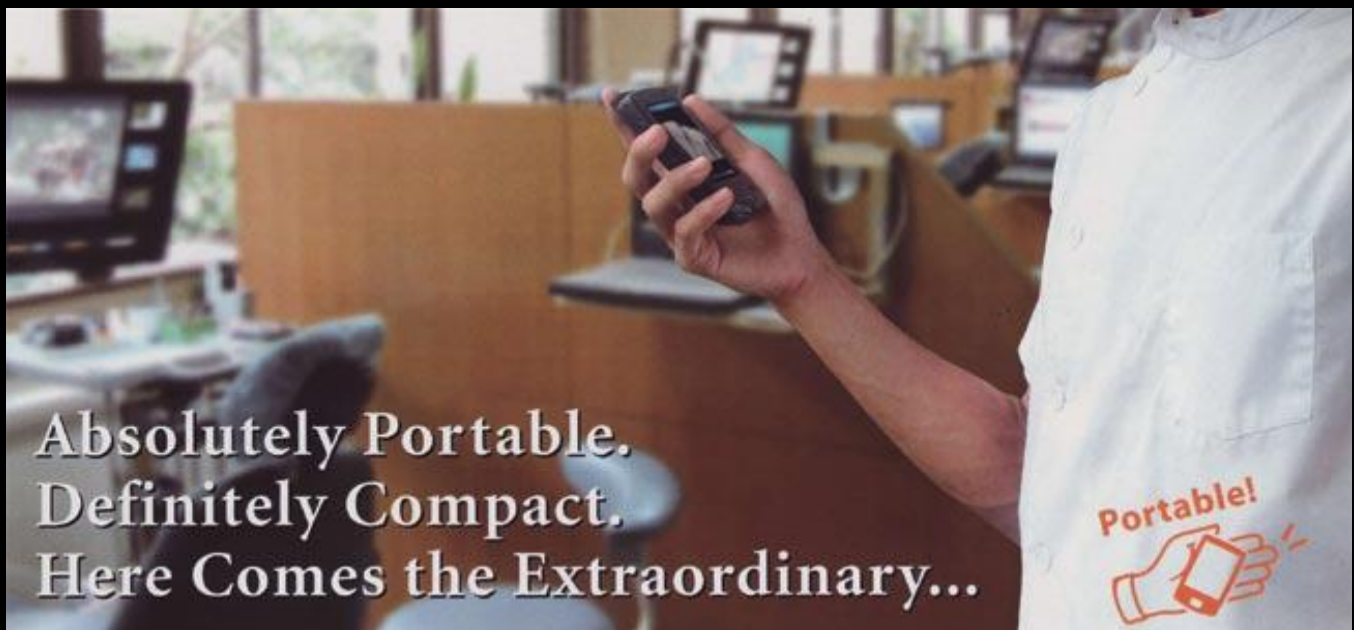


A portable digital intra oral radiography sensor with a brand new concept.

The compact size and portability of the DX-150 X-Ray Sensor, bring your radiology examination to the next level. After direct import from the sensor, the image is displayed instantly (within a few seconds) for immediate review on the palm-top display unit.

One-Click operation on the touch-screen PDA monitor provides instant access to initial saving / deleting /retaking of an x ray image.

The total portability allows for a smooth workflow between x-ray and examination rooms. The DX-150 Palm-Top also saves the x-ray photos to an SD memory card for easy storage, or a quick print-out.





Cutting Edge Technology in Palm Size!

The Intra-Oral Sensor:

* Images display automatically within seconds



- * Achieves a natural gray-scale image
- * 1.5 mega-pixels super sensitive CCD sensor
- * The DX-150 slice thin x-ray sensor enables easy intraoral positioning



SD Memory Card:

* Images are automatically saved on an SD memory card





One-Click Easy Operation of your dental X-ray System

Offering more options for dentists, and easier education for dental patients



Irradiation:

Shoot the X-Ray as usual

* Retrofits to existing X Ray environment (digital and/or film)



Image Display:

The X-ray photo is instantly displayed on the PDA unit for immediate review



Image Presentation:

The instant X-Ray photo display allows for an effortless presentation to your clients:

You can provide "on the spot" instant reviews, and by using the touch screen palm-top, educate your clients using the diverse image enhancements, manipulation, annotation, etc.



Image Management/ Print out:

The DX-150 saves the xray photo's to an SD memory card, providing easy transport of the images to a PC, a monitor, or to a printer for direct printing.





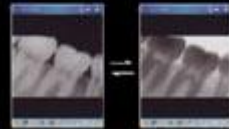
The DX-150 X-Ray Imaging Software Operation:

The touch screen Palm-Top unit allows for a variety of single-click operations.

- * Adjust brightness, contrast, etc.
- * Switch Black and White polarity (invert image)
- * Select an area of the image
- * Zoom, Rotate, add annotations, etc.
- * Switch to thumbnail view
- * Create and Browse image folders



	Thumbnail View		Selection Tool
	Switch to Thumbnail view for a 9 image display		Select an image area to manipulate
	Black / White invert		
	Invert the image black & white values		
	Adjustment		
	Adjust Brightness and contrast		



DX-150 Dental X-Ray Sensor and Imaging System - Technical Specification:

- * Method: X-Ray Imaging sensor and Scintillator
- * Radiography Sensor Structure: CCD
- * Pixel Pitch: Horizontal 20 μm(H) x 20 μm(V)
- * Resolution: 1500 x 1000 pixels (1.5 mega-pixels)
- * Max Active Area: 30 x 20 (mm)
- * Data output: JPEG
- * Operating temperature: 15-35 degree C (59-95 F)
- * Operating humidity: 30-75% RH
- * Power adapter: AC adapter (5V/4A)
- * Power consumption: 4W
- * Dimensions: 96mm x 31mm x 15mm
- * Weight: 370g

Sensor dimensions (mm):

