

Medicine Wing Establishment

Trade and maintenance of medical devices

SAESHIN



- BLDC motor with high performance designed by Saeshin's own high technology and Know-How
 - * RPM : (20:1) 30rpm ~ 2,000rpm / (32:1) 20rpm ~ 1250rpm
 - * Torque : 20:1 (5.0 ~ 55Ncm) 32:1 (5.0 ~ 65Ncm)
 - * Gear ratio : 1:5, 1:4, 1:1, 16:1, 20:1, 27:1, 32:1, 64:1
 - * Contra angle : TRAUUS CRB26LX (Optic) / TRAUUS CRB26XX (Non Optic)
MAX TORQUE : 80Ncm
 - * E-type motor : TRAUUS MBP10SL(SX) followed "ISO 3964" for standard connection (BLDC motor - 0~40,000rpm)
 - * Maximum Pump : Max.75mL/min
 - * LED : 25,000 LUX
- 10 Programs memory function
- Automatic overload protection function
- Actual RPM and Torque is indicated when motor is running which makes user verify proper working condition during operation.
- Ergonomic foot controlle
- Optic function : (Option)

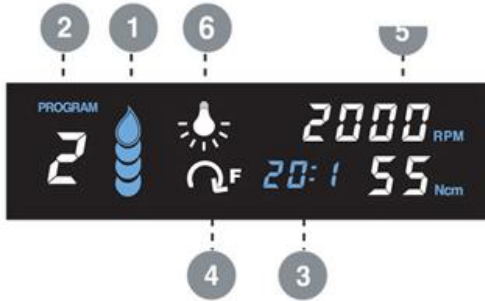


Implant



Medicine Wing Establishment

Trade and maintenance of medical devices



- 1 Irrigation volume display
- 2 Program number display
- 3 Gear ratio display
- 4 Direction display
- 5 Speed / Torque display
- 6 Optic display (Ver. optic angle)

OPTION



PRODUCT COMPONENTS



- 1-HANGER
- 2-FOOT CONTROLLER
- 3-CONTROL BOX
- 4-POWER CORD
- 5-MOTOR STAND
- 6-IRRIGATION TUBE
- 7-INTERNAL SPRAY NOZZLE
- 8-MOTOR CAP FOR AUTOCLAVE
- 9-ANGLE HANDPIECE
- 10-BLDC MOTOR
- 11-TUBE HOLDER
- 12-TUBE CLAMP
- 13-Y-TUBE
- 14-FOOT HANGER
- 15-FOOT HANGER JOINT CAP
- 16-INSTRUCTION MANUAL



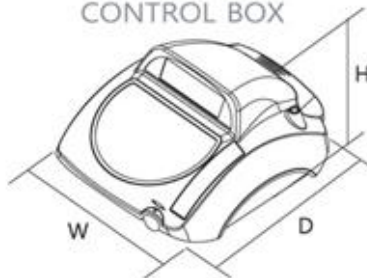
Medicine Wing Establishment

Trade and maintenance of medical devices



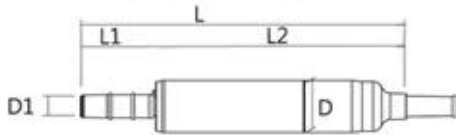
PRODUCT SPECIFICATION

CONTROL BOX



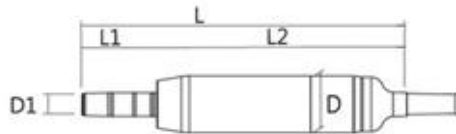
INPUT	AC100-120V~ / 220-240V~
FUSE	5A / 2A
FREQUENCY	50/60 Hz
OUTPUT	Max : 120W
MAXIMUM PUMP	Max.75mL/min
DIMENSIONS(mm)	W233 X D269 X H120
WEIGHT	4.5kg

IMPLANT MOTOR



Traus MBP10SX

NON LOAD RPM	WEIGHT	DIMENSION (mm)					134°C
		L	L1	L2	D	D1	
40,000	121g	137	31.7	105	22	9.8	



Traus MBP10SL

NON LOAD RPM	WEIGHT	DIMENSION (mm)					134°C
		L	L1	L2	D	D1	
40,000	150g	137	31.7	105	24	9.8	
* LED : 25,000 LUX							

Implant



Medicine Wing Establishment

Trade and maintenance of medical devices



- BLDC motor with high performance designed by Saeshin's own high technology and Know-How
- BLDC motor (Speed Range 0~40,000rpm) and Angle (Standard equipment 20:1) provides the optimum torque in surgery.
 - * RPM : (20:1) 30rpm ~ 2,500rpm / (32:1) 20rpm ~ 1,562rpm
 - * Torque : 20:1 (5.0 ~ 55Ncm) / 32:1 (5.0 ~ 65Ncm)
 - * Gear ratio : 1:5, 1:4, 1:1, 16:1, 20:1, 27:1, 32:1, 64:1
- Program memory function
 - * 10 programmable memories for setting Speed, Torque, Rotating Direction, Irrigation Pump
- Automatic overload protection function
 - * If the load on the Bur is higher than set Torque, the motor is stopped automatically after 2 seconds.
 - * For releasing the overload function, push foot control pedal.
- Actual RPM and Torque is indicated when motor is running, which makes user verify proper working condition during operation.
- Ergonomic foot control pedal
 - * The foot control pedal is designed ergonomically to control all the functions and it provides high convenience.
- Membrane touch display
- Self-diagnosis function

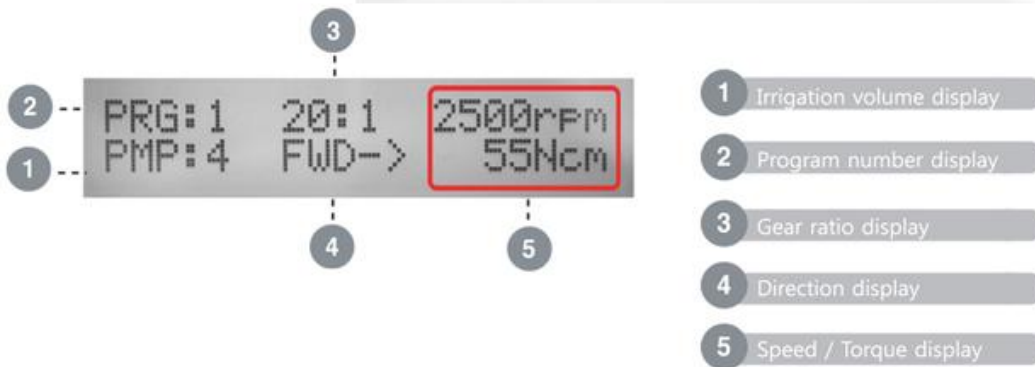
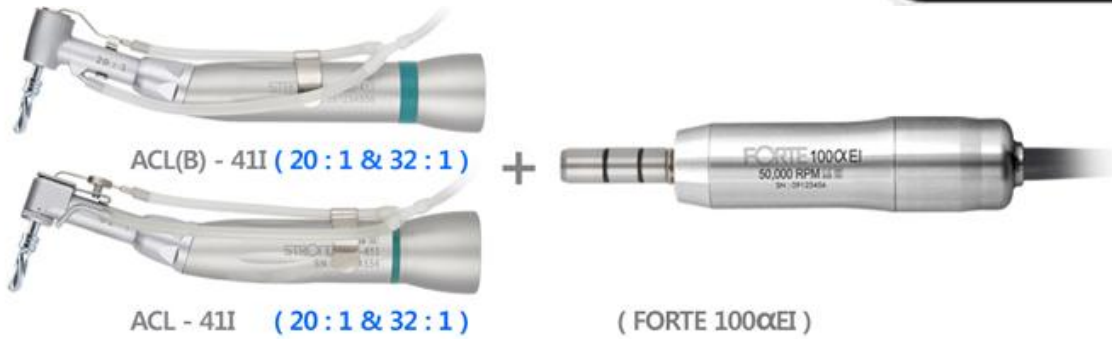


Implant



Medicine Wing Establishment

Trade and maintenance of medical devices



PRODUCT COMPONENTS

- 1-HANGER
- 2-FOOT CONTROL PEDAL
- 3-CONTROL BOX
- 4-POWER CORD
- 5-MOTOR STAND
- 6-IRRIGATION TUBE
- 7-INTERNAL SPRAY NOZZLE
- 8-MOTOR CAP FOR AUTOCLAVE
- 9-WRENCH
- 10-ANGLE HANDPIECE
- 11-BLDC MOTOR
- 12-TUBE HOLDER
- 13-TUBE CLAMP
- 14-Y-CONNECTOR

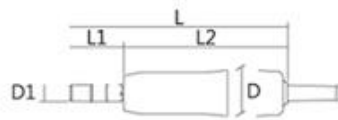
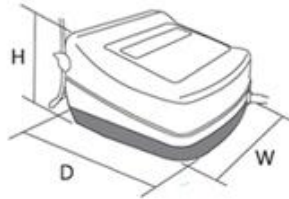


Medicine Wing Establishment

Trade and maintenance of medical devices



PRODUCT SPECIFICATION



CONTROL BOX

INPUT	AC100~120V / 220~240V
FUSE	5A / 2A
FREQUENCY	50/60 Hz
OUTPUT	Max : 120W
MAXIMUM PUMP	Max.75mL/min
DIMENSIONS(mm)	W205 X D210 X H136
WEIGHT	3.3kg

IMPLANT MOTOR

NON LOAD RPM	WEIGHT	DIMENSION (mm)					134°C
		L	L1	L2	D	D1	
50,000	212g	128	32	96	27	10	134°C



Optic TRAUS-CRB26LX



Non-Optic TRAUS-CRB26XX



- This function is only for optic angle Handpiece (Traus CRB26LX + Traus MBP10SL)
- Push button chuck
- Internal and external irrigation system
- Provides sufficient force at low speed (MAX torque 55Ncm) 20:1
- Ergonomic comfort grip
- 20:1/ 32:1 gear ratio
- Available for various E-type motors in accordance with ISO standard.



Medicine Wing Establishment

Trade and maintenance of medical devices



Non-Optic ACL-41I
(Lever)



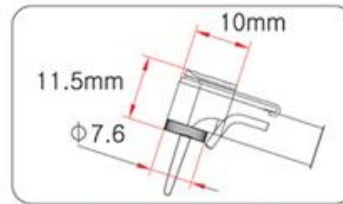
134°
SSS
134°C

Non-Optic ACL(B)-41I
(Button)



134°
SSS
134°C

- Lever / push button chuck
- Internal and external irrigation system
- Provides sufficient force at low speed (MAX torque 55Ncm) 20:1
- Ergonomic comfort grip
- 16:1/ 20:1/ 32:1/ 64:1 gear ratio
- Available for various E-type motors in accordance with ISO standard.



SMALL HEAD SIZE

GEAR RATIO

LEVER TYPE	ACL - 41I	ACL - 42I	ACL - 43I	ACL - 45I
	20 : 1	16 : 1	64 : 1	32 : 1
	60g	60g	64g	60g
BUTTON TYPE	ACL(B) - 41I	ACL(B) - 42I	ACL(B) - 43I	ACL(B) - 45I
	20 : 1	16 : 1	64 : 1	32 : 1
	60g	60g	64g	60g

PRODUCT SPECIFICATION

