

Medicine Wing Establishment

Trade and maintenance of medical devices



High speed

LOTUS 302PBQ

★ TECHNICAL PARAMETER:



DESCRIPTION	Push button type fibre optic high speed handpiece, triple water spray, anti-retraction system, with quick coupling
AIR PRESSURE AT THE BACK END OF HP	206~231 KPa (2.1~2.35 kgf/cm ²)
AIR PRESSURE AT THE GAUGE IN THE DENTAL UNIT	240-294 KPa (2.45-3.0 kgf/cm ²)
WATER PRESSURE	198Kpa (2 kg)
ROTATION SPEED	300,000-320,000 rpm
HEAD HIGHT	13.02 mm
HEAD DIAMETRE	φ12.5 mm
CHUCK TYPE	Push button
BUR APPLICABLE	φ1.59mm~φ1.6mm×21mm~23mm (diameter×length)
NOISE	≤70dB
INTENSITY OF LIGHT	25000 lx
SOURCE OF LIGHT	Haloid bulb
VOLT OF BULB	3.0~3.2 V
SAFETY CLASSIFICATION	B type application part

Dental Hand Pieces



Medicine Wing Establishment

Trade and maintenance of medical devices



LOTUS 302PQ

★ TECHNICAL PARAMETER:



DESCRIPTION	Push button type high speed handpiece, triple water spray, anti-retraction system, with quick coupling
AIR PRESSURE AT THE BACK END OF HP	206~231 KPa (2.1~2.35 kgf/cm ²)
AIR PRESSURE AT THE GAUGE IN THE DENTAL UNIT	240-294 KPa (2.45-3.0 kgf/cm ²)
WATER PRESSURE	198Kpa (2 kg)
ROTATION SPEED	300,000-320,000 rpm
HEAD HIGHT	13.02 mm
HEAD DIAMETRE	φ12.5 mm
CHUCK TYPE	Push button
BUR APPLICABLE	φ1.59mm~φ1.6mm×21mm~23mm (diameter×length)
NOISE	≤70dB

★ RELEVANT SPARE PARTS:



302 cartridge



302 push button cap



Normal spanner



302PB quick coupling

Dental Hand Pieces



Medicine Wing Establishment

Trade and maintenance of medical devices



LOTUS 302P

Lotus 302P-M4 302P-B2



★ TECHNICAL PARAMETER:

DESCRIPTION	Triple spray system high speed handpiece, push button type, anti-retraction system
AIR PRESSURE AT THE BACK END OF HP	206~231 KPa (2.1~2.35 kgf/cm ²)
AIR PRESSURE AT THE GAUGE IN THE DENTAL UNIT	240-294 KPa (2.45-3.0 kgf/cm ²)
WATER PRESSURE	198Kpa (2 kg)
ROTATION SPEED	300,000-320,000 rpm
HEAD HIGHT	13.02 mm
HEAD DIAMETRE	φ12.5 mm
CHUCK TYPE	Push button
BUR APPLICABLE	φ1.59mm~φ1.6mm×21mm~23mm (diameter×length)
NOISE	≤70dB

★ RELEVANT SPARE PARTS:



302 cartridge



302 push button cap



Normal spanner

Dental Hand Pieces



Medicine Wing Establishment

Trade and maintenance of medical devices



LOTUS 401P

Lotus 401P-M4 401P-B2



★ TECHNICAL PARAMETER:

DESCRIPTION	Standard head high-speed handpiece
	Push button type
	Single spray system
AIR PRESSURE	180-250 KPa (1.8-2.5 kgf / cm ²)
WATER PRESSURE	198Kpa (2 kg)
ROTATION SPEED	370,000- 420,000 rpm
HEAD HIGHT	14.6 mm
HEAD DIAMETRE	Φ11.2 mm
CHUCK TYPE	Push button
BUR APPLICABLE	φ1.59mm~φ1.6mm×21mm~23mm (di ameter×length)
NOISE	≤70dB

★ RELEVANT SPARE PARTS:



401P cartridge



401P push button cap



Normal spanner

Dental Hand Pieces



Medicine Wing Establishment

Trade and maintenance of medical devices



LOTUS 401

Lotus 401-M4 401-B2



★ TECHNICAL PARAMETER:

DESCRIPTION	Standard head high-speed handpiece Wrench type Single spray system
AIR PRESSURE	180-250 KPa (1.8-2.5 kgf / cm ²)
WATER PRESSURE	198Kpa (2 kg)
ROTATION SPEED	370,000~420,000 rpm
HEAD HIGHT	13.14 mm
HEAD DIAMETRE	Φ11.2 mm
CHUCK TYPE	Wrench
BUR APPLICABLE	φ1.59mm~φ1.6mm×21mm~23mm (diameter×length)
NOISE	≤70dB

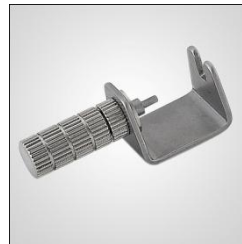
★ RELEVANT SPARE PARTS:



401 cartridge



401 back cap



401 bur key



Normal spanner

Dental Hand Pieces



Medicine Wing Establishment

Trade and maintenance of medical devices



LOTUS 402

Lotus 402-M4 402-B2



★ TECHNICAL PARAMETER:

DESCRIPTION	Mini head high-speed handpiece Wrench type Single spray system
AIR PRESSURE	180-250 KPa (1.8-2.5 kgf / cm ²)
WATER PRESSURE	198Kpa (2 kg)
ROTATION SPEED	370,000~430,000 rpm
HEAD HIGHT	10.4 mm
HEAD DIAMETRE	Φ10.2 mm
CHUCK TYPE	Wrench
BUR APPLICABLE	short bur with shank diameter Φ1.59~1.60 mm
NOISE	≤70dB

★ RELEVANT SPARE PARTS:



402 cartridge



402 back cap



402 bur key



402 cap spanner

Dental Hand Pieces



Medicine Wing Establishment

Trade and maintenance of medical devices



LOTUS 403

Lotus 403-M4 403-B2



★ TECHNICAL PARAMETER:

DESCRIPTION	Super Torque high-speed handpiece Wrench type Single spray system
AIR PRESSURE	250-300 Kpa (2.45-2.8 kgf / cm ²)
WATER PRESSURE	198Kpa (2 kg)
ROTATION SPEED	350,000 rpm
HEAD HIGHT	12.21 mm
HEAD DIAMETRE	φ12.9 mm
CHUCK TYPE	Wrench
BUR APPLICABLE	φ1.59mm~φ1.6mm×21mm~23mm (diameter×length)
NOISE	≤70dB

★ RELEVANT SPARE PARTS:



403 cartridge



403 back cap



403 bur key



Normal spanner

Dental Hand Pieces



Medicine Wing Establishment

Trade and maintenance of medical devices



DISPOSABLE WITH LED LIGHT

LOUTS 401DB



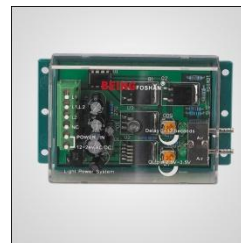
★ TECHNICAL PARAMETER:

DESCRIPTION	With light disposable high speed handpiece Triple water spray Need no sterilization nor maintenance But circle use forbid
AIR PRESSURE	180~250 KPa (1.8-2.5 kgf / cm ²)
WATER PRESSURE	198Kpa (2 kg)
ROTATION SPEED	≥ 300,000 rpm
TORQUE	≥ 9.5 N
GRIP POWER	20-45N
POWER TO INSET BUR	≤ 45N
CHUCK TYPE	Friction Grip
BUR APPLICABLE	φ 1.59mm~φ 1.6mm×21mm~23mm (diameter×length)
NOISE	≤ 70dB
INTENSITY OF LIGHT	20000 lx
SOURCE OF LIGHT	LED
CURRENT OF BULB	3.0~3.2 V

★ RELEVANT SPARE PARTS:



Fibre optic tube



Circuit board

Dental Hand Pieces



Medicine Wing Establishment

Trade and maintenance of medical devices



DISPOSABLE WITH LED LIGHT

LOUTS 401D

LOUTS 401UBQ



Dental Hand Pieces



Medicine Wing Establishment

Trade and maintenance of medical devices



★ TECHNICAL PARAMETER:

DESCRIPTION	Dispasable high speed handpiece Single water spray Need no sterilization nor maintenance But circle use forbid
AIR PRESSURE	180~250 KPa (1.8-2.5 kgf / cm ²)
WATER PRESSURE	198Kpa (2.kg)
ROTATION SPEED	≥300,000 rpm
TORQUE	≥ 9.5 N
GRIP POWER	20-45N
POWER TO INSET BUR	≤45N
CHUCK TYPE	Friction Grip
BUR APPLICABLE	φ1.59mm~φ1.6mm×21mm~23mm (diameter×length)
NOISE	≤70dB

★ RELEVANT SPARE PARTS:



Quick coupling

Dental Hand Pieces



Medicine Wing Establishment

Trade and maintenance of medical devices



Low speed

ROSE201

Rose 201-M4 201-B2



★ TECHNICAL PARAMETER:

DESCRIPTION	E type low speed handpiece 1:1 Ratio, with external cooling system
AIR PRESSURE	245~392Kpa (2.5~4.0 kgf/cm ²)
WATER PRESSURE	198Kpa (2.kg)
ROTATION SPEED	22,000~27,000 rpm
CHUCK TYPE	Latch type
BUR APPLICABLE	Φ2.334~2.355 mm
NOISE	≤70dB

★ RELEVANT SPARE PARTS:



201CA front cap



201CA bur key



201 oil spray nozzle



201CA cap spanner



201 water spray nozzle



201CA cartridge

Dental Hand Pieces



Medicine Wing Establishment

Trade and maintenance of medical devices



Rose 201SH



201CA head(with cartridge)



201CA middle gear



Rose 201 SH

DESCRIPTION	E type low speed handpiece 1:1 Ratio, with external cooling system
AIR PRESSURE	245~392Kpa (2.5~4.0 kgf/cm ²)
WATER PRESSURE	198Kpa (2 kg)
ROTATION SPEED	22,000~27,000 rpm
CHUCK TYPE	Latch type
BUR APPLICABLE	Φ2.334~2.355 mm
NOISE	≤70dB

Dental Hand Pieces



Medicine Wing Establishment

Trade and maintenance of medical devices



Low speed

ROSE202



DESCRIPTION	E type low speed handpiece 1:1 Ratio, with internal cooling system
AIR PRESSURE	245~392Kpa (2.5~4.0 kgf/cm ²)
WATER PRESSURE	198Kpa (2 kg)
ROTATION SPEED	22,000~27,000 rpm
CHUCK TYPE	Latch type
BUR APPLICABLE	Φ2.334~2.355 mm
NOISE	≤70dB



202CA(P)-B

202CA(P)

202SH-B

202SH

202AM

202AM-B

203EM

Dental Hand Pieces

